



FLOATING BRIDGE

Granby, Quebec

MAIN FEATURES

- Floating bridge of 330' long x 15' wide;
- Designed for pedestrians, bicycles and snow cleaning/removing service vehicle
- Anchoring on chains and deadmen;
- Handrails along the whole floating bridge for the users security;
- Central rest area with benches and lighting;
- System in operation 12 months per year even during heavy winter conditions
- Timbertech composite decking
- Installed by a local contractor under the supervision of Structurmarine's site technician.





FLOATING BRIDGE

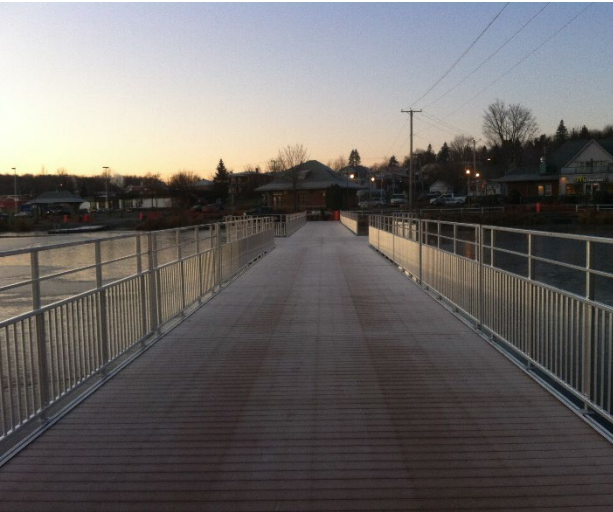
Granby, Quebec





45°23'46.24"N – 72°42'41.04"W





REFERENCE

Installed in 2011

Sylvain Latour, Project Manager

s.latour@bertrandostiguy.ca
+1 450 372-7364

<http://bertrandostiguy.ca/>

