



EDGEWATER PIER & DOCKAGE

Madison, Wisconsin, USA

MAIN FEATURES

- 50- Boat slips
- Dock anchoring on anchor lines & concrete blocks
- Aluminium access gangway of 20' long including handrails and waves protection guides
- Marina with full services
- Composite wood decking
- *Project completed in 2015*
- Project value: 192,000.00\$ USD

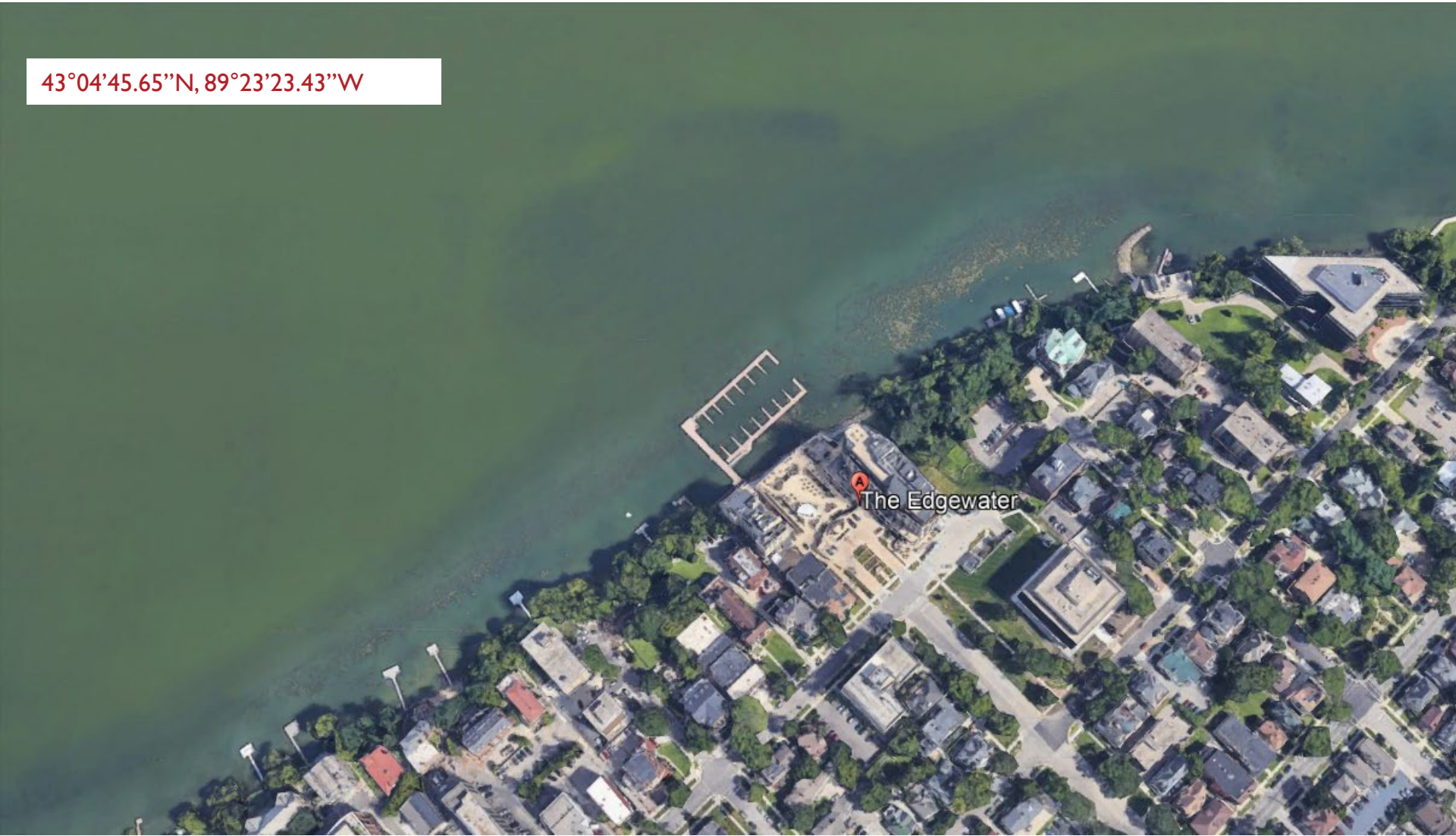




EDGEWATER PIER & DOCKAGE
Madison, Wisconsin, USA



43°04'45.65"N, 89°23'23.43"W





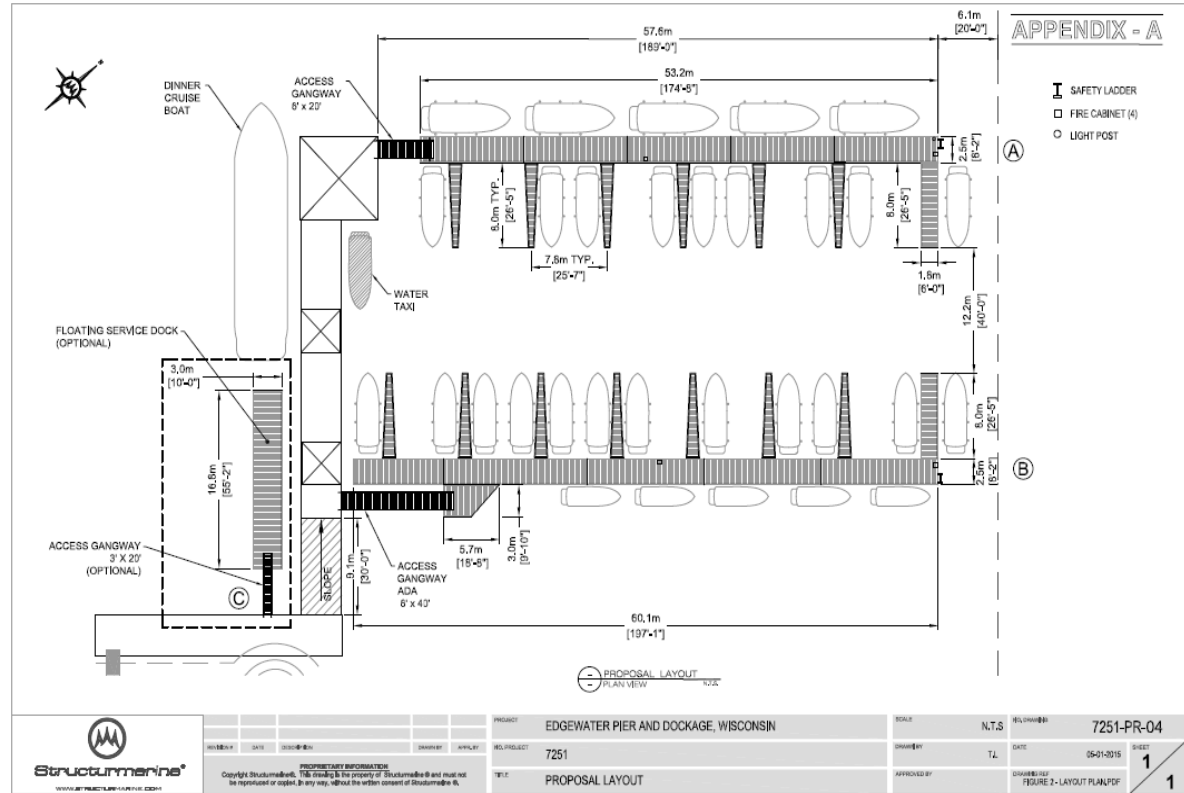
REFERENCE

Installed in 2015

Kenneth Manning, Project Director

(608) 519-5285

<https://www.theedgewater.com/>



WWW.STRUCTURMARINE.COM

PROJECT REFERENCES // EDGEWATER PIER & DOCKAGE